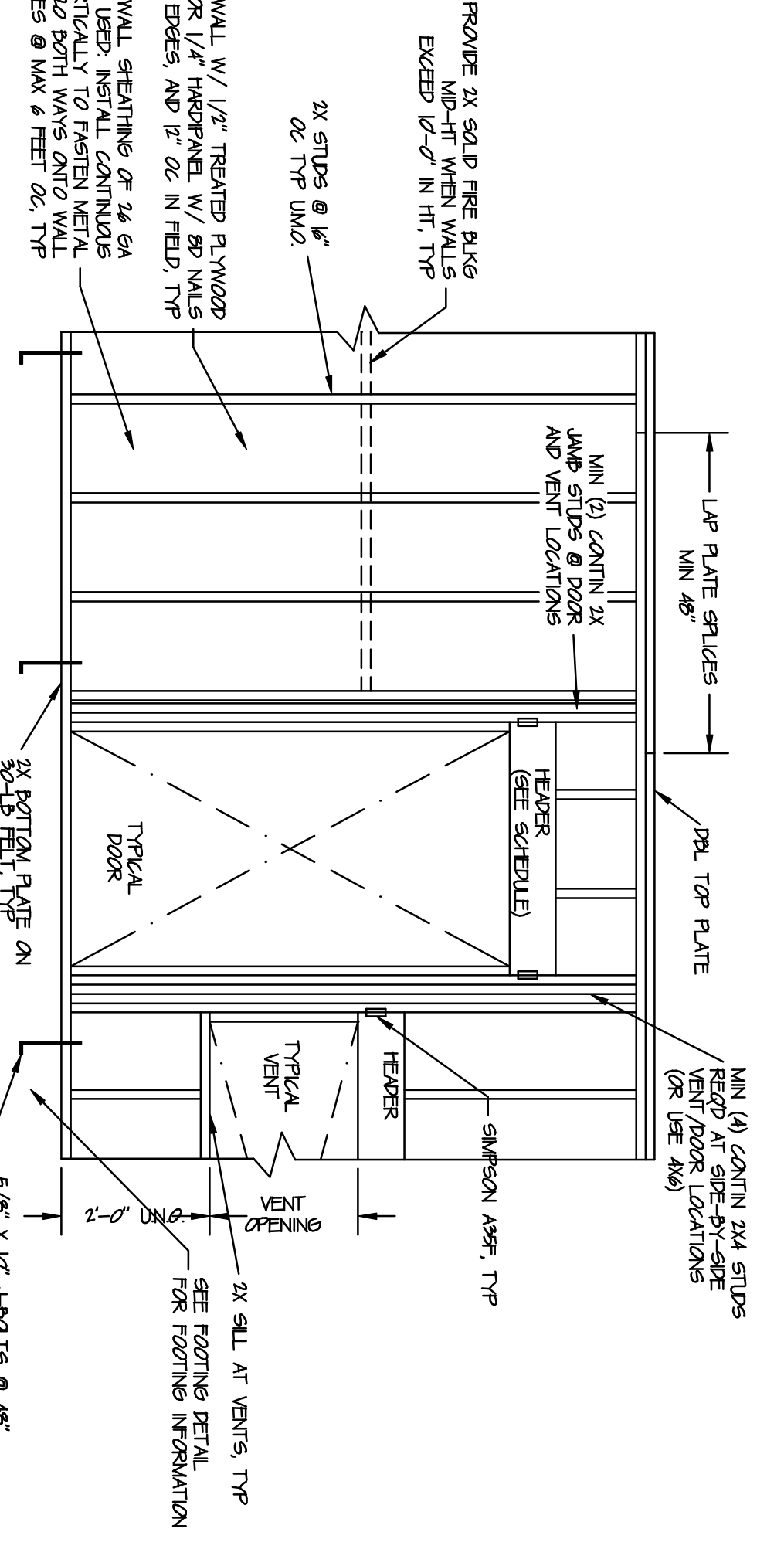
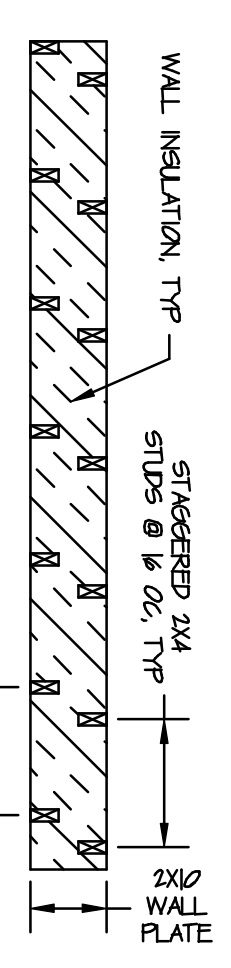


TYP. WALL FRAMING ELEVATION
"MODULAR-TYPE" WALLS
1/2" = 1'-0"

SIZE	CAN SUB.	MAXIMUM SPANS
4x4	N/A	4'-0"
4x6	N/A	6'-0"
4x8	N/A	8'-0"
4x10	N/A	10'-0"
4x12	N/A	12'-0"
6x6	N/A	16'-0"
6x8	N/A	18'-0"
6x10	N/A	20'-0"
6x12	N/A	24'-0"
8x8	N/A	24'-0"
8x10	N/A	28'-0"
8x12	N/A	32'-0"
10x10	N/A	32'-0"
10x12	N/A	36'-0"
12x12	N/A	40'-0"

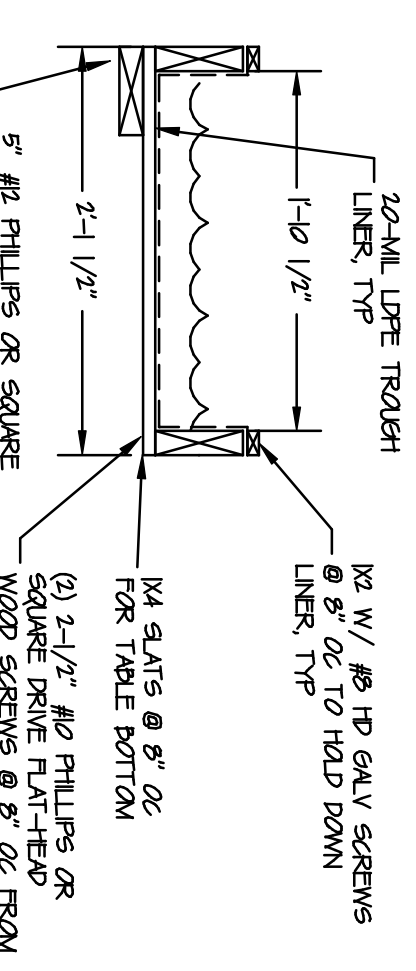


TYP. WALL FRAMING ELEVATION
"BUILT-IN-PLACE" WALLS
1/2" = 1'-0"

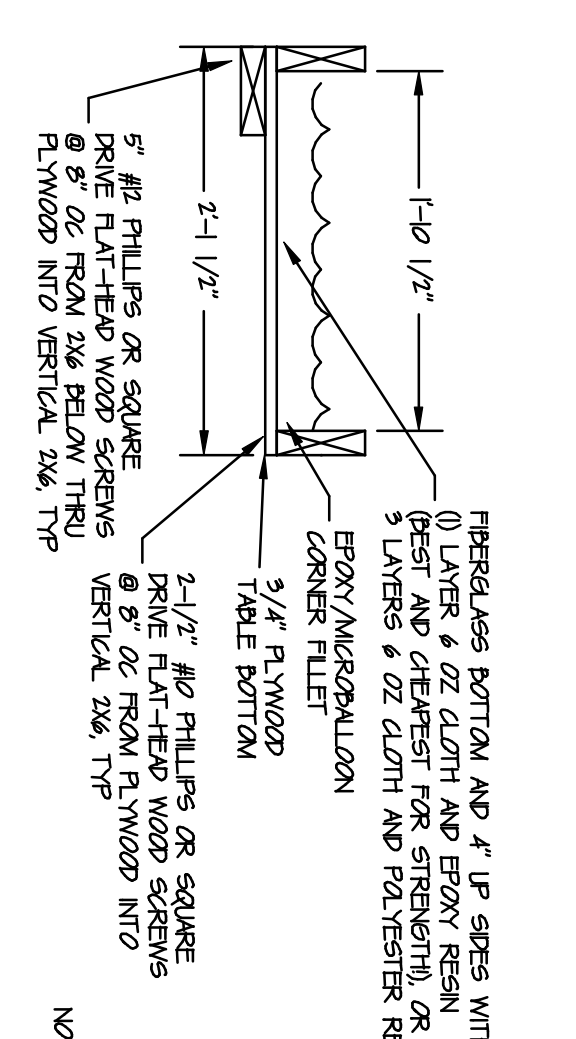


WALL PLATE WITH
STAGGERED STUDS
1/2" = 1'-0"

NOTE: THESE ARE TWO EASY METHODS OF MAKING THE SPRUITING TABLES. ONE USES EPOXY GLUE AND FIBERGLASS TO MAKE A PERMANENT WATERPROOF TABLE. WHILE ANOTHER TWO USES STAGGERED 2x4 WALL PLATE TO WATERPROOF THE TABLE LIKE THE ONE THAT IS EASIEST FOR YOU TO BUILD.



SLAT AND LINER TYPE
SPROUTING TABLE, SECTION VIEW
1/2" = 1'-0"

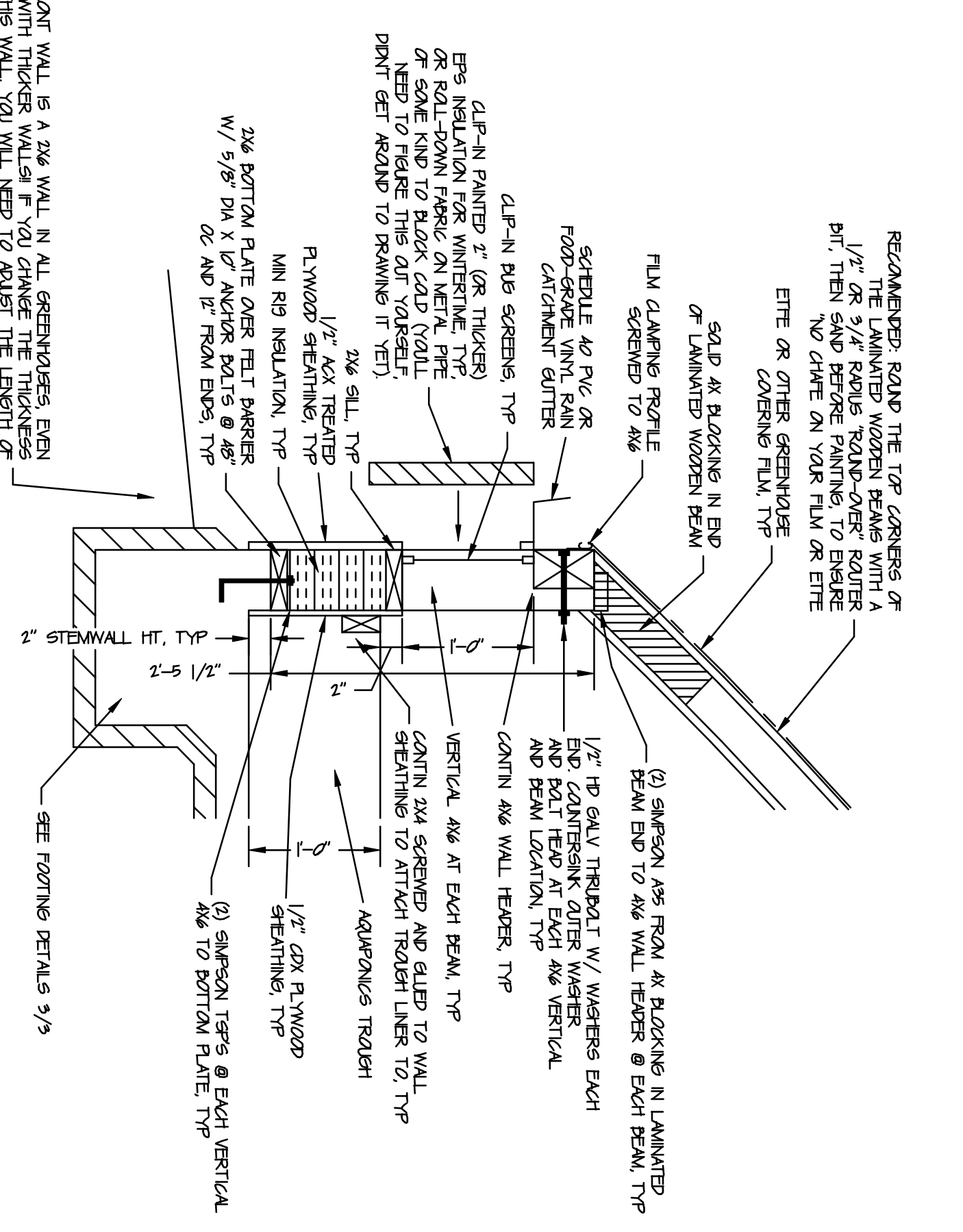


EPOXY/FIBERGLASS TYPE
SPROUTING TABLE, SECTION VIEW
1/2" = 1'-0"

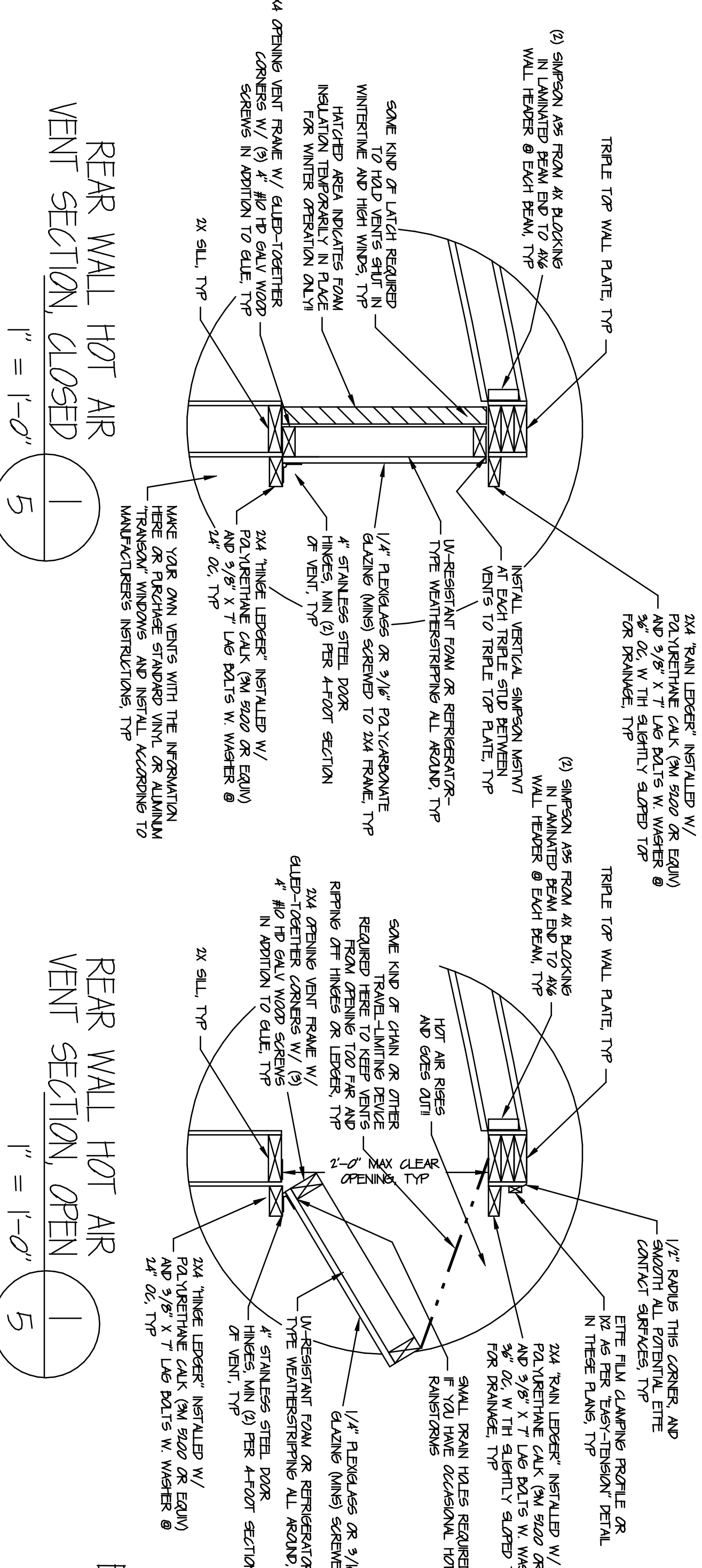
NOTE: THIS MATERIAL COPYRIGHT BY FRIENDLY AQUAPONICS, INC., QUANNE FRIEND, AND TIM WANN 1008-1018 CORNING OR USING PORTIONS OR EXCERPTS OF THIS MATERIAL WITHOUT EXPRESS WRITTEN PERMISSION FROM THE AUTHOR IS PROHIBITED BY LAW.

NOTE: Use of these CAD drawings and accompanying materials for the purpose of constructing or having constructed an aquaponic system and/or growing substantially similar to the ones shown in this manual and CAD drawings constitutes acceptance of the following conditions and terms of use of this material:

- You have the right to personally construct or have constructed one or more aquaponic systems and/or greenhouses for others, allow others to construct aquaponic systems and/or greenhouses for others, allow others to construct by or for others you hereby agree to grant to Friendly Aquaponics, Inc., Honolulu, Hawaii 96721, the sum of \$500 US for each such aquaponic system and/or greenhouse constructed using these plans.
- You construct aquaponic systems and/or greenhouses for others, allow others to construct aquaponic systems and/or greenhouses for others, allow others to construct by or for others you hereby agree to grant to Friendly Aquaponics, Inc., Honolulu, Hawaii 96721, the sum of \$500 US for each such aquaponic system and/or greenhouse constructed using these plans.

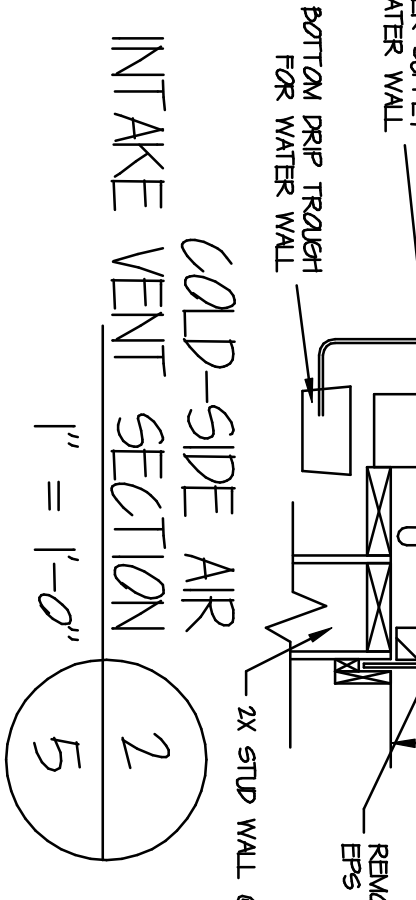


SECTION 4
1/2" = 1'-0"



REAR WALL HOT AIR
VENT SECTION, CLOSED
1/2" = 1'-0"

REAR WALL HOT AIR
VENT SECTION, OPEN
1/2" = 1'-0"



COLD-SIDE AIR
INTAKE VENT SECTION
1/2" = 1'-0"